



**Melbourne Park  
and Street**

**BE PART  
OF IT**



# **Orienteering**

**Summer Evening Series 2017-2018**



[www.vicorienteeing.asn.au](http://www.vicorienteeing.asn.au)  
[www.parkstreeto.com.au](http://www.parkstreeto.com.au)

**ORIENTEERING  
VICTORIA**



# SUMMER 2017-2018

## PARK & STREET ORIENTEERING IN AND NEAR MELBOURNE

Park and street orienteering provides an ideal opportunity for mental and physical exercise during summer. If you can walk to the local shops, you are fit enough to participate. You do not need a compass or any special map reading ability.

All events have three to five runners' courses, ranging from 3 to 10 km, plus a 1 hour walking course. There are four major series – **Southern, Western, Eastern and Northern** – and three smaller series – **Macedon Ranges, Geelong, and Surf Coast**.

You need to arrive about half an hour before the start of each event to register and prepare. You will need running gear or lightweight clothing and shoes. Bring a drink when hot and a clear plastic pocket for your map on damp days.

**PLEASE PARK ON ONE SIDE OF STREETS ONLY.**

### Competition Formats

**Scatter** – You must visit a specified number of control locations, in any order. First to finish wins. This is the standard format for running courses.

**Score** – Controls have varying points values. The aim is to collect as many points as you can before a set finish time. There are penalties for being late. **MAKE SURE YOU BRING A WATCH.** This is the standard format for walking courses.

Maps are usually black and white, A4 size at 1:10,000 scale and with 5m contours.

### Entry Fees

**Pay on the day** – \$5.00 for adults, \$2.00 for juniors.

**Season tickets** – Season tickets are only available to Orienteering Victoria members. Substantial discounts are offered to purchasers of either single series or multi-series tickets\*, with further discounts for juniors\*\* and families\*\*. Season tickets are not refundable or exchangeable after the three week selling period ceases.

Cheques are to be made out to 'Dandenong Ranges Orienteering Club'.

\* *There are separate tickets for the Southern Summer, Western Sunset, Eastern Summer and Northern Summer series. **Season tickets are not available for the Macedon Ranges, Surf Coast, and Geelong Series.***

\*\* *Juniors: persons born after 31st Dec 1997. Family: two adults and any number of dependent juniors.*

## Park and Street Championships

The 2018 Park and Street Championships will be held on Tuesday February 27. Finals places will be offered to successful qualifiers at designated events as indicated in the fixture. For details see [www.vicorienteing.asn.au/parkstreet/championship](http://www.vicorienteing.asn.au/parkstreet/championship) or pick up a flyer at events.

## Schools Challenge

These competitions are for primary and secondary students to compete as individuals or as part of a formal school group. The events are part of the Melbourne Summer Series:

**Events 18 to 21** (Wednesdays – Eastern Silva School Challenge)

**Events 17 to 21** (Tuesdays – Western School Competition)

Students' individual scores are counted in the course of their choice at these events and tallied for schools points. Phone Peta Whitford on 0428 358 588 (Eastern) or Ken Moore on 9337 5417 (Western) for details.

## Guide to Wheelchair/Pram Accessibility

**A – Good:** Sealed footpaths, reasonably level gradients and no barriers to wheelchairs/prams

**B – Fair:** Some rougher tracks, small hills or other impediments to wheelchair/pram progress

**C – Poor:** Barriers on some routes, steeper gradients, some paths not suitable for wheelchairs/prams

**D – Unsuitable:** Extremely poor access: rough tracks, steep gradients, fences, steps and other barriers



**The Companion Card provides free entry for cardholders assisting disabled persons.**

## Orienteering Clubs

Regular participants are strongly encouraged to join a club, and hence become a member of Orienteering Victoria. There are many benefits for full members, eg eligibility to buy season tickets for significant savings. Park and street orienteering in and near Melbourne is organised by the Melbourne-based clubs:



## Orienteering Victoria Membership Fees

Annual fees: senior: \$35, junior/student: \$6, in addition to the club membership fee (varies depending on club). Membership will be valid through to 31 Dec 2018. More information about OV membership can be found at [www.vicorienteing.asn.au/aboutorienteering/membership/](http://www.vicorienteing.asn.au/aboutorienteering/membership/)



**Event details, results and other information may be found at:**  
[www.vicorienteing.asn.au/parkstreet](http://www.vicorienteing.asn.au/parkstreet) and [www.parkstreeto.com.au](http://www.parkstreeto.com.au)

Monday		Southern Summer Series				2017/2018		
#	Date	Map	Club	Start Location/Notes	Suburb	Melway	♿	
1	16 Oct	Gardiners Bend	BK	Darling Park, enter from Stanley Grose Drive	Malvern East	60 A12	B	
2	23 Oct	Wheeler's Hill	DR	Mulgrave Reserve, Garnett Road	Wheeler's Hill	81 A1	B	
3	30 Oct	Ashwood South	NE	Jordan Reserve, Burton Street	Chadstone	69 K1	B	
4	06 Nov	Nortons Park	DR	Nortons Park, Nortons Lane	Wantirna South	72 A2	C	
5	13 Nov	Waverley Parklands	BK	Gladeswood Reserve, enter from Maygrove Way or Gladeswood Drive	Mulgrave	81 A4	B	
6	20 Nov	Camelot Rise	NE	Capital Reserve, Capital Avenue	Glen Waverley	62 G12	A	
7	27 Nov	Waterford Valley	DR	Sanctuary Crescent	Rowville	73 H8	A	
8	04 Dec	Valley Reserve	BK	Pinewood Shopping Centre, off The Centreway, SW carpark closest to transmission lines	Mount Waverley	70 H5	C	
9	11 Dec	Glenfern Run	AR	Ferntree Gully Community Centre, off Burwood Highway	Ferntree Gully	74 B5	B	
10	18 Dec	Coomoora	DR	Alex Nelson Reserve, Harold Road	Springvale South	88 K4	A	
25 Dec		<b>NO EVENT</b>						
11	01 Jan	Clarinda	BK	Namatjira Park, enter from Springs Road <i>New Year BBQ</i>	Clayton South	79 A5	B	
12	08 Jan	Strathaird	DR	Strathaird Reserve, Community Parade	Narre Warren South	130 A4	A	
13	15 Jan	Hampton Park	DR	Cairns Road Reserve, Campbell Drive	Hampton Park	96 D9	A	
14	22 Jan	Tally Ho	NE	Burwood East Reserve, Burwood Highway – turn right after entering and follow signs	Burwood East	62 B8	B	
15	29 Jan	Rowville Lakes	DR	Parkridge Reserve, Dandelion Drive	Rowville	73 F12	A	
16	05 Feb	Glen Iris	BK	Burwood Reserve, Queens Parade	Glen Iris	60 G7	B	
17	12 Feb	Notting Hill	AR	Mayfield Park, Mayfield Drive	Mt Waverley	70 B4	B	
18	19 Feb	Mulgrave	DR	Car park north end of Hansworth Street <i>Champs Qualifier</i>	Mulgrave	80 H5	A	
19	26 Feb	Academy Hill	BK	Brandon Park Reserve, enter from Ferntree Gully Road	Glen Waverley	71 C8	B	
20	05 Mar	Waverley Woods	NE	Federal Reserve, Barton Street	Mt Waverley	61 D9	B	
12 Mar		<b>NO EVENT</b>						

## Mass Start – 7:00 pm – All Events

A to D and PW courses. The 2017/2018 Southern Summer Series will be a 20-week competition. Your best 11 results will be selected and totalled for the competition period. Presentations will be held at the last Eastern Summer Series event.

Tuesday		Western Summer Series				2017/2018	
#	Date	Map	Club	Start Location/Notes	Suburb	Melway	♿
1	17 Oct	Kensington	BK	Childers Street	Kensington	2T G7 / 42 J4	A
2	24 Oct	Essendon	BK	Railway station car park, Rose Street	Essendon	28 G4	A
3	31 Oct	Ascot Vale	BK	Ascot Vale Leisure Centre, enter from Epsom Road	Ascot Vale	28 F10	B
4	07 Nov	Gilpin Gallop	BK	Brunswick Park, Victoria Street	Brunswick	29 E7	B
5	14 Nov	Montgomery Park	MF	Montgomery Park, Hilda Street	Essendon	29 A4	B
6	21 Nov	Boeing Reserve	TK	East end of Boeing Road	Strathmore Heights	16 D5	B
7	28 Nov	Altona Gate	YV	DN Duane Reserve, Primula Avenue	Brooklyn	40 K11	B
8	05 Dec	Footscray Central	TK	Jamieson Avenue	Footscray	2T A6 / 42 F3	B
9	12 Dec	Copperfield	NE	Delahey Community Centre, Copperfield Drive	Delahey	13 D5	A
10	19 Dec	Williamstown Strand	BK	Corner of The Strand and John Street <a href="#">Dinner</a>	Williamstown	56 D7	A
	26 Dec			<b>NO EVENT</b>			
11	02 Jan	Port Melbourne	BK	Edwards Park, corner Lardet and Dow Streets <a href="#">End of Series 1</a>	Port Melbourne	2J F5	A
12	09 Jan	Fairbairn Park	TK	Corner Woods and Newsome Streets <a href="#">Dinner and Presentations</a>	Ascot Vale	28 D9	B
13	16 Jan	Truganina South	NE	Arndell Park Community Centre, Federation Boulevard	Truganina South	203 E9	A
14	23 Jan	Airport West	TK	Etzel St Reserve, 27A Etzel Street	Airport West	15 H7	B
15	30 Jan	Glengala	BK	Ainsworth Reserve, corner Frank Street and Vernon Crescent	Sunshine West	26 A12	A
16	06 Feb	Altona Mound	DR	Andrew Park Drive	Altona Meadows	208 K1	B
17	13 Feb	Tea Gardens	TK	Canning Reserve, Canning Street <a href="#">Schools 1 and Champs Qualifier</a>	Avondale Heights	27 G8	B
18	20 Feb	Rifle Range	BK	Corner of Swanston Street and Collins Street <a href="#">Schools 2 and Champs Qualifier</a>	Williamstown	55 K8	A
19	27 Feb	Valley Lakes	TK	Essendon Keilor College, 82 Quinn Grove <a href="#">Championships Final</a>	East Keilor	15 G12	B
20	06 Mar	Edgewater	TK	Maribyrnong Boulevard <a href="#">Schools 3</a>	Footscray	2S G3 / 42 D2	B
21	13 Mar	Camp One	TK	Corner The Strand and Mt Alexander Road <a href="#">Schools 4</a>	Moonee Ponds	28 H6	A
1	20 Mar	Kingsville	NE	Mclvor Reserve, enter from west end of Hawkhurst Street <a href="#">Start of Autumn Series; Presentation Dinner</a>	Yarraville	41 G10	B

## Mass Start – 7:00 pm – All Events

A to D and PW courses. The 2017/2018 Western Summer Series will consist of two competitions of 11 and 10 weeks each. Your best 6 results will be totalled for each competition period. Presentations will be held at the 12th Summer and first Autumn events.

#	Date	Map	Club	Start Location/Notes	Suburb	Melway	
1	18 Oct	Forest Chase	DR	Mahoneys Reserve, Mahoneys Road <a href="#">BBQ and Spring Presentations</a>	Forest Hill	62 C4	A
2	25 Oct	Dandenong Creek	NE	H. E. Parker Reserve, Heathmont Road	Heathmont	64C2	C
3	01 Nov	Blackburn North	BK	Koonung Park, Heppner Street	Blackburn North	47 K7	C
4	08 Nov	Ruffey Lake	YV	Ruffey Lake Park, enter from The Boulevard	Doncaster	33 F10	D
5	15 Nov	Blind Creek	DR	Lewis Park, off Lewis Road	Wantirna South	64 B10	B
6	22 Nov	Belmore Parklands	BK	Macleay Park, enter off Belmore Road	Balwyn North	46 C4	B
7	29 Nov	Burnley Maze	NE	Burnley Park. Park on Yarra Boulevard	Burnley	44 J11	B
8	06 Dec	Blackburn South	AR	Eley Park, Eley Road	Blackburn South	61 H5	B
9	13 Dec	Bayswater	DR	Knox Community Arts Centre, enter from Scoresby Road	Bayswater	64 G3	A
10	20 Dec	Highbury Hill	BK	Tally Ho Park, Bennett Avenue	Mount Waverley	61 J9	B
11	27 Dec	Deepdene	NE	Balwyn Park, Cherry Road	Balwyn	46 D8	B
12	03 Jan	Cathies Corner	DR	Car park, corner Harold and Templeton Streets	Wantirna	63 H8	A
13	10 Jan	Kew East	BK	Stradbroke Park, enter from Burke Road. Additional parking in Lawrence Street, Bennet Street or Harp Road.	Kew East	45 K4	B
14	17 Jan	Camberwell	BK	Willison Park, Culliton Road	Camberwell	60 B3	B
15	24 Jan	Mullum Mullum	AR	Mullum Mullum Reserve, Mullum Mullum Road	Ringwood	49 K5	C
16	31 Jan	Croydon Hills	YV	Lipscombe Park Reserve, Kirtain Drive	Croydon	36 G12	B
17	07 Feb	Mitcham	DR	Heatherdale Reserve, Purches Street <a href="#">Champs Qualifier</a>	Mitcham	49 C12	B
18	14 Feb	Trinity Triangle	MF	Trinity Grammar School Sporting Complex, off Bulleen Road <a href="#">Schools 1 and Champs Qualifier</a>	Bulleen	32 E8	C
19	21 Feb	Heyington Heights	BK	Scotch College - west end of Morrison Street <a href="#">Schools 2</a>	Hawthorn	59 B1	C
20	28 Feb	Wattle Park	NE	Enter from Riversdale Road. Park in chalet or golf course carparks <a href="#">Schools 3</a>	Burwood	60 K3	C
21	07 Mar	Canterbury Trails	BK	Canterbury Gardens - park north side of Canterbury Station <a href="#">Schools 4</a>	Canterbury	46 D11	B
22	14 Mar	Maroondah Triangle	DR	Scout Hall, Mines Road. Park on Mines Road or at Karralyka Centre <a href="#">Non scoring event; Dinner and Awards Night</a>	East Ringwood	50 A7	B

### Mass Start – 7:00 pm – All Events

A to E and PW courses. The 2017/2018 Eastern Summer Series will be a 21-week competition, along with one non-scoring event in week 22. Your best 11 results from the scored events will be selected and totalled for the competition period. Presentations will be held at the final event.

#	Date	Map	Club	Start Location/Notes	Suburb	Melway	
1	19 Oct	Greensborough	NE	SW corner of Civic Centre carpark, Civic Circuit	Greensborough	11 A10	C
2	26 Oct	St Helena	YV	Glendale Reserve, Brixton Ave	Eltham North	11 G12	D
3	02 Nov	Park Orchards	DR	Iona Grove Reserve, Feversham Avenue	Park Orchards	35 F12	D
4	09 Nov	Heidelberg Central	BK	Rosanna Railway Station Car Park, Turnham Avenue	Rosanna	32 A1	B
5	16 Nov	Eltham Parklands	NE	Eltham Central Park, enter from Main Road	Eltham	21 J5	C
6	23 Nov	Research	YV	Research Primary School, Main Road	Research	22 H2	D
7	30 Nov	Templestowe Trails	BK	Pettys Reserve, Reynolds Road <a href="#">New Map</a>	Templestowe	33 K5	B
8	07 Dec	Bundoora Parklands	NE	Bundoora Park - enter from Plenty Road and follow Orienteering signs	Bundoora	19 F4	C
9	14 Dec	Merrilands	YV	L E Cotchin Reserve, Massey Avenue <a href="#">New Map</a>	Reservoir	8 D12	A
10	21 Dec	Yarran Dheran	DR	Schwerkolt Cottage, Deep Creek Road	Mitcham	49 D7	C
11	28 Dec	Darebin Parklands	BK	Darebin Parklands – east end of Separation Street	Alphington	31 C9	C
12	04 Jan	Boulder Dash	NE	Northcote Shopping Plaza, north car park - enter from Dennis Street	Northcote	30 F7	A
13	11 Jan	Quarries Park	MF	Quarries Park, east end of Ramsden Street	Clifton Hill	44 F2	C
14	18 Jan	Briar Hill	YV	Poulter Reserve, Poulter Avenue (parking available at the station car park)	Greensborough	21 A2	D
15	25 Jan	Merri Parklands South	BK	Merri Park, Sumner Avenue	Northcote	30 C8	C
16	01 Feb	Koonung Crossing	DR	Park Reserve, Park Avenue	Doncaster	32 J12	B
17	08 Feb	Quamby Quandary	NE	Quambee Reserve, off Wonga Road	Ringwood North	36 A11	C
18	15 Feb	Bundoora Parade	BK	Binnak Park, Anderson Parade	Watsonia North	10 D12	C
19	22 Feb	Polaris	YV	Woolworths car park, Copernicus Crescent <a href="#">Champs Qualifier</a>	Bundoora	19 G4	D
20	01 Mar	Warralong	AR	Montmorency Park, Lower Plenty Oval, enter from Para Road	Montmorency	21 B6	C
21	08 Mar	Eltham Town	NE	Car park between Dudley Street and Arthur Street	Eltham	21 K5	B
22	15 Mar	Edwardes Lake	BK	Edwardes Lake Park, Griffiths Street <a href="#">Non scoring event</a>	Reservoir	18 E5	B

## Mass Start – 7:00 pm – All Events

A to D and PW courses. The 2017/2018 Northern Summer Series will be a 21-week competition, along with one non-scoring event in week 22. Your best 11 results from the scored events will be selected and totalled for the competition period. Presentations will be held at the last Eastern Summer Series event.



Wednesday		Macedon Ranges Summer Series				2017/2018	
#	Date	Map	Club	Start Location/Notes	Suburb	Melway/VR	
1	29 Nov	Macedon	CH	J D Clifford Reserve, Greene Street	Macedon	657 C9	
2	06 Dec	Riddells Creek	CH	Recreation Reserve, Sutherlands Road	Riddells Creek	660 F8	
3	13 Dec	Kyneton	CH	Botanical Gardens, Mollison Street	Kyneton	VR 632 C6	
4	30 Jan	Sunbury	CH	Rotunda, Ligar Street	Sunbury	382 D3	
5	07 Feb	Woodend	CH	Campaspe Park	Woodend	VR 633 O4	
6	14 Feb	Sunbury	CH	Shields Street Reserve, Shields Street	Sunbury	382 E6	
7	21 Feb	Gisborne	CH	Scout Hall, Daly Reserve, Howey Street <i>Champs Qualifier</i>	Gisborne	678 C4	

### Wednesday Evenings, Mass Start – 7:00 pm – All Events

A, B, C and PW courses. All running courses are SCATTER format; PW is SCORE format.

**Contact: John Ewels – Ph 5426 1649 or 0400 468 278**

Thursday Geelong and Saturday Surf Coast Series		2017/2018				
#	Date	Map	Club	Start Location/Notes	Suburb	Melway
<b>Thursdays</b>						
1	09 Nov	Sailors Delight	BK	Rippleside Park, Bell Parade	Drumcondra	442 A10
2	16 Nov	Gaol Break	BK	Richmond Oval, Richmond Crescent	South Geelong	452 C7
3	23 Nov	Waurm Ponds Creek	BK	Leisure Centre, Pioneer Road	Waurm Ponds	465 C5
4	30 Nov	Lovely View	BK	Goldsworthy Reserve, Goldsworthy Road	Corio	431 K9
5	07 Dec	King of the Mountain	BK	Montpellier Primary School, Mount Pleasant Road	Highton	451 B9
<b>Saturdays</b>						
1	06 Jan	Ocean Grove	BK	Corner Wedge and Draper Streets	Ocean Grove	484 A11
2	13 Jan	Point Lonsdale	BK	Ganes Reserve, Laker Drive	Point Lonsdale	499 H5
3	20 Jan	Barwon Heads	BK	Barwon Heads Village Park, enter from Sheepwash Road	Barwon Heads	497 A1
4	27 Jan	Queenscliff	BK	SE corner of Hesse and King Streets	Queenscliff	499 F11
<b>Thursdays</b>						
6	01 Feb	Fishermans Beach	BK	The Esplanade, near Darian Road intersection	Torquay	506 C4
7	08 Feb	Swans	BK	MacDonalds Reserve, Reynolds Road	Belmont	465 D1
8	15 Feb	Waltzing Matilda	BK	Coolabah Park, Coolabah Drive <i>Champs Qualifier</i>	Grovedale	465 D8
9	22 Feb	Racing Royalty	BK	Aldershot Reserve, Aldershot Road	St Albans Park	466 K2
10	01 Mar	Top of Town	BK	Moorak Park, Cairns Avenue	Newtown	451 H5

### Thursday Evenings, Mass Start – 7:00 pm – All Events

A to D and PW courses. All running courses are SCATTER format; PW is SCORE format.

**Contact: Alan Cooke – Ph 0411 023 107**

### Saturday Afternoons, Mass Start – 4:00 pm – All Events

A, B, C and PW (60 or 90 minute) courses. All courses are SCORE format.

Best 3 out of 4 events for series win.

**Contact: John Sheahan – Ph 9397 3493**

## Saturday/Sunday

## Sprint Into Spring Series

2017

#	Date	Map	Start Location/Notes	Suburb	Melway
1	Sat 14 Oct	University of Melbourne	Sports Centre – no car parking on campus. Take public transport or park on surrounding streets	Parkville	2A D6
2	Sat 21 Oct	Oxley College	Old Melbourne Road	Chirnside Park	37 E6
3	Sat 28 Oct	VU Edgewater	Farnsworth Avenue	Footscray	2S 4F
4	Sat 11 Nov	RMIT Bundoora West	Plenty Road	Bundoora	10 A8
5	Sat 18 Nov	Royal Park	Brens Drive; park as directed on arrival	Parkville	29 D12
6	Sat 25 Nov	Latrobe University	Ring Road, Car Park 6	Bundoora	19 H6
7	Sun 26 Nov	Monash University	Main entrance, Wellington Road; follow the orienteering signs to parking	Clayton	70 G12

*Some venues have permits pending. Any changes or updates to venue details will be posted on Eventor and the website [www.parkstreeo.com.au/sprint](http://www.parkstreeo.com.au/sprint). Please check these sites prior to each event.*

Orienteering Victoria presents an exciting series of sprint distance races on Saturday afternoons. Each race features three courses on full-colour, large-scale maps.

**Check details at [www.parkstreeo.com.au/sprint](http://www.parkstreeo.com.au/sprint)**

## Summer Mountain Bike Orienteering (MTBO) Series



A series of low-key mountain bike orienteering events during January, February and March. Ideal as an introduction to MTBO, or for those wishing to enjoy a summer bike ride of discovery, or just for some extra training.

All courses are 75 minute SCORE format. 20 controls, all worth 20 points, with a 10 point penalty per minute late. You decide which ones to visit and in what order.

Enter on the day. Cost: \$10.00 adults, \$5.00 juniors/students. To find out where and when events are on, visit **[www.vicmtbo.com](http://www.vicmtbo.com)**.

**Contact: Peter Cusworth – Ph 0409 797 023.**

## Other Victorian Orienteering Events

Other park and street, bush and mountain bike events are held in and near Melbourne, and in regional Victoria, during the autumn/winter/spring period on weeknights and weekends.

**Visit [www.vicorienteeing.asn.au](http://www.vicorienteeing.asn.au)**

## Extreme Weather Conditions and Other Late Changes

Events may be cancelled in the event of certain weather conditions such as Code Red fire danger, extreme heat, or heavy rainfall/storms/flooding. Other late changes may sometimes be necessary. Updates will be posted on **[www.vicorienteeing.asn.au](http://www.vicorienteeing.asn.au)**.

# MELBOURNE SPRINT WEEKEND

10-12 MARCH 2018  
LABOUR DAY LONG WEEKEND

COME JOIN US FOR A FEAST OF SPRINT ORIENTEERING IN MELBOURNE AND GEELONG

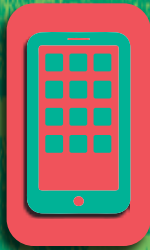
## FEATURING:

- ☑ Six events in three days with both AM and PM races
- ☑ First four events comprising a National O League event
- ☑ Predominantly campus maps
- ☑ Age grade courses

PLACE THIS EVENT IN YOUR CALENDAR NOW!

[www.vicorienteering.asn.au/msw2018](http://www.vicorienteering.asn.au/msw2018)





**Scan QR code  
with your smart  
phone to find us  
on the web**

