



**Melbourne Park
and Street**

**BE PART
OF IT**



Orienteering

Summer Evening Series 2015-2016



www.vicorienteering.asn.au
www.parkstreeto.com.au



**ORIENTEERING
VICTORIA**



SUMMER 2015–2016

PARK & STREET ORIENTEERING IN AND NEAR MELBOURNE

Park and street orienteering provides an ideal opportunity for mental and physical exercise during summer. If you can walk to the local shops, you are fit enough to participate. You do not need a compass or any special map reading ability.

All events have three to five runners' courses, ranging from 3 to 10 km, plus a 1 hour walking course. There are four major series – **Southern, Western, Eastern and Northern** – and three smaller series – **Macedon Ranges, Geelong, and Surf Coast**.

You need to arrive about half an hour before the start of each event to register and prepare. You will need running gear or lightweight clothing and shoes. Bring a drink when hot and a clear plastic pocket for your map on damp days.

PLEASE PARK ON ONE SIDE OF STREETS ONLY.

Competition Formats

Scatter – You must visit a specified number of control locations, in any order. First to finish wins. This is the standard format for running courses.

Score – Controls have values ranging from 2 to 5 points. The aim is to collect as many points as you can before a set finish time. There are penalties for being late. **MAKE SURE YOU BRING A WATCH.** This is the standard format for walking courses.

Maps are usually black and white, A4 size at 1:10,000 scale and with 5m contours.

Entry Fees

Pay on the day – \$4.00 for adults, \$2.00 for juniors.

Season tickets – Season tickets are only available to Orienteering Victoria members. Substantial discounts are offered to purchasers of either single series or multi-series tickets*, with further discounts for juniors** and families**. Season tickets are not refundable or exchangeable after the 3 week selling period ceases.

Cheques are to be made out to 'Dandenong Ranges Orienteering Club'.

* There are separate tickets for the Southern Summer, Western Sunset, Eastern Summer and Northern Summer series. **Season tickets are not available for the Macedon Ranges, Surf Coast, and Geelong Series.**

** Juniors: persons born after 31st Dec 1995. Family: two adults and any number of dependent juniors.

Park and Street Championships

The 2016 Park and Street Championships will be held on Monday February 29. Finals places will be offered to successful qualifiers at designated events as indicated in the fixture.

For details see www.vicorienteering.asn.au/parkstreet/champs or pick up a flyer at events.

Schools Challenge

These competitions are for primary and secondary students to compete as individuals or as part of a formal school group. The events are part of the Melbourne Summer Series:

Events 18 to 21 (Wednesdays – Eastern Silva School Challenge)

Events 15 to 19 (Tuesdays – Western School Competition)

Students' individual scores are counted in the course of their choice at these events and tallied for schools points. Phone Peta Whitford on 8846 4140 (Eastern) or Ken Moore on 9337 5417 (Western) for details.

Guide to Wheelchair/Pram Accessibility

A – Good: Sealed footpaths, reasonably level gradients and no barriers to wheelchairs/prams

B – Fair: Some rougher tracks, small hills or other impediments to wheelchair/pram progress

C – Poor: Barriers on some routes, steeper gradients, some paths not suitable for wheelchairs/prams

D – Unsuitable: Extremely poor access: rough tracks, steep gradients, fences, steps and other barriers



The Companion Card provides free entry for cardholders assisting disabled persons.

Orienteering Clubs

Regular participants are strongly encouraged to join a club, and hence become a member of Orienteering Victoria. There are many benefits for full members, eg eligibility to buy season tickets for significant savings. Park and street orienteering in and near Melbourne is organised by the Melbourne-based clubs:



Orienteering Victoria Membership Fees

Annual dues: senior: \$25, junior/student: \$1, in addition to the club membership fee (varies depending on club). Membership will be valid through to 31 Dec 2015. More information about OV membership can be found at www.vicorienteering.asn.au/aboutorienteering/membership/



Event details, results and other information may be found at:
www.vicorienteering.asn.au/parkstreet and www.parkstreeto.com.au

Monday		Southern Summer Series				2015/2016	
#	Date	Map	Club	Start Location/Notes	Suburb	Melway	
1	19 Oct	Tally Ho	DR	Vision Drive, west end	Burwood East	62 C8	B
2	26 Oct	Kangaroo Very Flat	BK	Packer Park, Leila Road	Carnegie	68 J8	A
3	2 Nov	Wantirna South	AR	Knox Gardens Reserve, Argyle Way. Park in surrounding streets	Wantirna South	72 H2	A
4	9 Nov	Glen Eira	NE	Mackie Road Reserve, Mackie Road	East Bentleigh	69 C12	B
5	16 Nov	Elsternwick Park	BK	Elsternwick Park, Bent Avenue, near playground. Park in New Street or St Kilda Street	Brighton	67 E4	A
6	23 Nov	Mitchell Hill	DR	Carlson Avenue Reserve, Clayton Road	Clayton	70 D9	A
7	30 Nov	Valley Reserve	BK	Pinewood Shopping Centre, off The Centreway, sw car park closest to transmission lines	Mount Waverley	70 H5	C
8	7 Dec	Kingsclere	DR	Tennis club car park off Bloomfield Road	Keysborough	89 E8	B
9	14 Dec	Waverley Woods	NE	Essex Heights Reserve, Outlook Road	Mt Waverley	61 B10	B
10	21 Dec	Tirhatuan	BK	Tirhatuan Park, enter from Outlook Drive	Dandenong North	81 F8	C
11	28 Dec	Strathaird	DR	Strathaird Reserve, Community Parade	Narre Warren South	130 A4	A
12	4 Jan	Hampton Park	DR	Car park off Enterprise Avenue	Hampton Park	96 F8	A
13	11 Jan	Berwick Springs	DR	Park along Moondarra Drive, near Abercrombie Street	Narre Warren South	130 K4	B
14	18 Jan	Waterford Valley	AR	Karoo Reserve, Karoo Road	Rowville	73 E9	A
15	25 Jan	Chelsea Heights	BK	Bonbeach Sports Reserve west car park, Cannes Avenue	Bonbeach	97 D4	A
16	1 Feb	Ashwood South	NE	Brickmakers Park, park in Stamford Road	Oakleigh	69 J6	B
17	8 Feb	Clarinda	BK	Bald Hill Park, Inverness Street	Clarinda	78 K4	B
18	15 Feb	Mulgrave	AR	Wellington Reserve, off Mackie Road	Mulgrave	80 C3	B
19	22 Feb	Knox Fields	BK	RD Egan-Lee Reserve, enter from Wallace Road. PAS Champs Qualifier	Knoxfield	73 B3	A
20	29 Feb	Gladeswood Spur	DR	Gladeswood Reserve Community Centre, enter from Gladeswood Drive. PAS Champs Final	Mulgrave	81 A4	C
21	7 Mar	Bentleigh	BK	Bentleigh Recreation Reserve, Arthur Street. End of season Dinner	Bentleigh	77 F1	A

Mass Start – 7:00 pm – All Events

A to D and PW courses. The 2015/2016 Southern Summer Series will be a 21-week competition. Your best 11 results will be selected and totalled for the competition period. Presentations will be held at the last Eastern Summer Series event.



For further information about the Southern
Summer Series, call Annie Hollaway – 9872 5710



Tuesday		Western Sunset Series				2015/2016	
#	Date	Map	Club	Start Location/Notes	Suburb	Melway	
1	27 Oct	Clifton Park	TK	Clifton Park, Batman Street	Aberfeldie	28 B4	B
2	10 Nov	Williamstown Beach	BK	NE cnr Fearon Reserve, park in Osborne Street. Welcome dinner	Williamstown	56 C10	A
3	17 Nov	Fairbairn Park	TK	Fairbairn Park, cnr Newson and Woods Streets	Ascot Vale	28 D9	B
4	24 Nov	Newport Lakes	BK	Newport Lakes Park, enter from Lakes Drive	Newport	55 G3	C
5	1 Dec	Footscray Central	TK	Car park next to Library, Paisley Street	Footscray	42 C4	A
6	8 Dec	Airport West	TK	Etzel Street Reserve, Etzel Street	Airport West	15 H7	C
7	15 Dec	Seddon	BK	York Street. Park in Yarraville Club car park or surrounding streets. Score event, Christmas dinner	Yarraville	42 B9	A
8	22 Dec	The Strand	BK	Cnr The Strand and Stevedore Street	Williamstown	56 D8	A
9	29 Dec	Princes Hill	BK	Princes Park, cnr Garton and Macpherson Streets	Carlton North	29 H12	A
10	5 Jan	North Melbourne	BK	Fogarty Street, enter from Arden Street	North Melbourne	43 B4 or 2A D8	A
11	12 Jan	Cherry Lake	BK	Municipal Offices, cnr Pier Street and Civic Parade. Park west side of offices. Score event, presentations and dinner	Altona	54 H10	A
12	19 Jan	Port Melbourne	YV	Edwards Park, best parking is in Liardet Street	Port Melbourne	57 C3	A
13	26 Jan	Buckley Park	BK	Enter from Cooper Street	Essendon	28 C1	C
14	2 Feb	Footscray Park	TK	Maribyrnong Boulevard	Footscray	42 D2	B
15	9 Feb	Sea Breeze	NE	Ransom Reserve, park along The Esplanade. Schools 1	Altona	54 E12	A
16	16 Feb	Glengala	BK	Ainsworth Reserve, cnr Frank Street and Vernon Crescent. Schools 2 and PAS Champs Qualifier; Dinner	Sunshine West	26 A12	A
17	23 Feb	Montgomery Park	YV	Montgomery Park, Hilda Street. Schools 3 and PAS Champs Qualifier	Moonee Ponds	29 A4	B
18	1 Mar	Valley Lakes	TK	Essendon-Keilor College, Quinn Grove. Schools 4	East Keilor	15 G12	B
19	8 Mar	Ascot Vale	BK	Community Centre, Farnham Street. Schools 5	Flemington	28 K11	C
20	15 Mar	Whitten Oval	BK	Whitten Avenue	West Footscray	41 K4	C

Autumn Series

1	22 Mar	Yarraville Greens	NE	Mclvor Reserve, Hawkhurst Street. Presentations and dinner	Kingsville	41 G10	B
---	--------	-------------------	----	--	------------	--------	---

Mass Start – 7:00 pm – All Events

A to D and PW courses. The 2015/2016 Western Series will be two 10-week competitions. Your best 6 results will be selected and totalled for each competition period. Presentations will be held at the 11th summer and first autumn events, respectively.

Wednesday		Eastern Summer Series				2015/2016	
#	Date	Map	Club	Start Location/Notes	Suburb	Melway	
1	21 Oct	Smiths Dell	NE	Car park south end Robinson Road <i>Winter series presentations</i>	Hawthorn	59 E3	B
2	28 Oct	Glen Iris	BK	Ferndale Park, Glen Iris Road	Glen Iris	60 A7	A
3	4 Nov	Dandenong Creek	NE	H E Parker Reserve, Heathmont Road	Heathmont	64 C2	C
4	11 Nov	Blackburn Lake	YV	Outside Blackburn Lake Sanctuary, Central Road. Park on the street only, not within the park	Blackburn	48 B11	B
5	18 Nov	Koolunga	DR	Rail car park off Underwood Road, east of rail line	Ferntree Gully	74 C3	C
6	25 Nov	Blackburn South	BK	Eley Park, Eley Road	Blackburn South	61 H5	B
7	2 Dec	Harvey Heights	AR	Wicks Reserve, Basin-Olinda Road	The Basin	65 H8	C
8	9 Dec	Bellbird Dell	DR	Sportlink car park, off Hanover Road	Vermont South	62 G7	B
9	16 Dec	Koonung Heights	YV	Wilson's Road Reserve, Wilson's Road	Doncaster	47 A2	B
10	23 Dec	Yarran Dheran	DR	Schwerkolt Cottage, Deep Creek Road	Mitcham	49 D7	C
11	30 Dec	McCubbin	NE	Masters car park nw cnr, off Middleborough Road	Box Hill South	61 F3	B
12	6 Jan	Blackburn North	BK	Doncaster Reserve, Doncaster Road. Park in Jackson Court Shopping Centre or surrounding streets	Doncaster East	47 K1	C
13	13 Jan	Croydon Hills	DR	Yarrunga Reserve, Barwon Court	Croydon Hills	36 G9	B
14	20 Jan	Camelot Rise	NE	Capital Reserve, Capital Avenue	Glen Waverley	62 G12	B
15	27 Jan	Gardiners Bend	BK	Darling Park, Stanley Grose Drive	Malvern East	60 A12	B
16	3 Feb	Mitcham	AR	Heatherdale Reserve, Purches Street	Heatherdale	49 C12	B
17	10 Feb	Camberwell	DR	Willison Park, Culliton Road	Camberwell	60 B3	A
18	17 Feb	Trinity Triangle	BK	Trinity Grammar School Sporting Complex, Bulleen Road. <i>Schools 1 and PAS Champs Qualifier</i>	Bulleen	32 E8	C
19	24 Feb	Canterbury Trails	BK	Canterbury Gardens. Park north side of Canterbury Station. <i>Schools 2 and PAS Champs Qualifier</i>	Canterbury	46 D11	B
20	2 Mar	Greythorn	YV	Gordon Barnard Reserve, enter from Belmore Road. <i>Schools 3</i>	Balwyn North	46 E5	A
21	9 Mar	Heyington Heights	BK	Kevin Bartlett Reserve, Yarra Boulevard. <i>Schools 4 and final scoring event</i>	Hawthorn	59 B1	B
22	16 Mar	Maroondah Triangle	DR	Scout Hall, Mines Road – park on Mines Road or in Karralyka Centre. <i>Non-scoring event, Awards Night and BBQ dinner</i>	East Ringwood	50 A7	B

Mass Start – 7:00 pm – All Events

A to E and PW courses. The 2015/2016 Eastern Summer Series will be a 21-week competition, along with one non-scoring novelty event. Your best 11 results from the scored events will be selected and totalled for the competition period. Presentations will be held at the 22nd event.

Thursday		Northern Summer Series				2015/2016		
#	Date	Map	Club	Start Location/Notes	Suburb	Melway		
1	22 Oct	Warralong Heights	BK	Diamond Village Shopping Centre, Medbury Avenue	Greensborough	20 G4	B	
2	29 Oct	St Helena	YV	Anthony Beale Reserve, enter from St Helena Road	St Helena	11 E11	D	
3	5 Nov	Middle Mullum <i>(new map)</i>	DR	Mullum Mullum Reserve, Reynolds Road	Donvale	34 H7	C	
4	12 Nov	Bellfield	BK	Ford Park, Davidson Street	Bellfield	31 D4	A	
5	19 Nov	Eltham Parklands	NE	Eltham Central Park, enter from Main Road	Eltham	21 J5	C	
6	26 Nov	Coburg Lake	YV	Basketball stadium carpark, Outlook Road	Coburg North	18 A10	B	
7	3 Dec	Boulderdash	NE	All Nations Park nw cnr, adjacent to Dennis Street	Northcote	30 G7	B	
8	10 Dec	Banyule	BK	Heidelberg Park, Beverley Road	Heidelberg	32 B4	B	
9	17 Dec	Park Orchards	DR	Domeney Reserve, Knees Road	Park Orchards	35 E9	C	
NO EVENT CHRISTMAS EVE								
10	31 Dec	Heidelberg Central	BK	Rosanna Railway Station car park, Turnham Avenue	Rosanna	32 A1	B	
11	7 Jan	Diamond Creek	NE	Car park east end of Challenger Street, approach via Moray and Campbell Streets	Diamond Creek	11 K7	D	
12	14 Jan	Zerbes Reserve	YV	Zerbes Reserve, enter from Blackburn Road	Doncaster East	34 B10	D	
13	21 Jan	Darebin Parklands	BK	Darebin Parklands, east end of Separation Street	Alphington	31 C9	C	
14	28 Jan	Koonung Crossing	DR	Koonung Reserve, Furneaux Grove	Bulleen	32 F10	B	
15	4 Feb	Clifton Hill	MF	Quarries Park, east end of Ramsden Street	Clifton Hill	44 F2	C	
16	11 Feb	Templestowe Heights	NE	Ted Ajani Reserve, enter from Thompsons Road	Templestowe Lower	32 K7	B	
17	18 Feb	Polaris	YV	N.J. Telfer Reserve. Enter from Greenwood Drive. <i>PAS Champs Qualifier</i>	Bundoora	20 A2	B	
18	25 Feb	Greensborough	NE	Nillumbik Civic Centre / Library car park, Civic Circuit	Greensborough	11 A10	C	
19	3 Mar	Gaffney Hill	BK	Raeburn Reserve, Landells Road	Pascoe Vale	17 C9	C	
20	10 Mar	Bulleen Ups & Downs	DR	Bulleen Plaza Shopping Centre, Derreck Avenue. <i>Final scoring event</i>	Bulleen	32 G7	B	
21	17 Mar	Brunswick	BK	Clifton Park, Albert Street. Park in Victoria Street. <i>Non-scoring event and end of season dinner</i>	Brunswick	29 E7	A	

Mass Start – 7:00 pm – All Events

A to D and PW courses. The 2015/2016 Northern Summer Series will be a 20-week competition, along with one non-scoring novelty event. Your best 11 results from the scored events will be selected and totalled for the competition period. Presentations will be held at the 21st event.



For further information about the Northern Summer Series, call Ewen Templeton – 9434 6071



Wednesday		Macedon Ranges Summer Series			2015/2016	
#	Date	Map	Start Location/Notes	Suburb	VicRoads	
1	2 Dec	Macedon	Opposite Primary School, Smith Street	Macedon	634 D9	
2	9 Dec	Riddells Creek	Sports Centre, Sutherland Road	Riddells Creek	606 F9	
3	16 Dec	Kyneton	Botanical Gardens, Mollison Street	Kyneton	632 C6	
4	3 Feb	Sunbury	Galaxy Land, Belleview Drive	Sunbury	382 C8	
5	10 Feb	Woodend	Information Centre, Main Street	Woodend	633 O4	
6	17 Feb	Gisborne	Lions Park, opp Aquatic Centre, Aitken Street. PAS Champs Qualifier	Gisborne	636 D7	

Wednesday Evenings, Mass Start – 7:00 pm – All Events

A, B, C and PW courses. All running courses are SCATTER format; PW is SCORE format.

Contact: John Ewels – Ph 5426 1649 or 0400 468 278

Thursday Geelong and Saturday Surf Coast Series		2015/2016			
#	Date	Map	Start Location/Notes	Suburb	VicRoads
Thursdays					
1	5 Nov	Waurm Ponds Creek	Oberon High School, Kidman Avenue	Belmont	465 G2
2	12 Nov	West Tech	Hurst Reserve, Douglass Street	Herne Hill	441 E11
3	19 Nov	Swans	McDonald Reserve, Reynolds Road	Belmont	465 D1
4	26 Nov	King of the Mountain	Montpellier Primary School, Mount Pleasant Road	Highton	451 B9
5	5 Dec	Canadians	Canoe Club, Balyang Sanctuary, Marnock Road	Newtown	451 F8
Saturdays					
1	4 Jan	Queenscliff	Queenscliff Recreation Reserve, Hesse Street	Queenscliff	499 F12
2	11 Jan	Ocean Grove	Cnr Draper and Wedge Streets	Ocean Grove	484 A11
3	18 Jan	Point Lonsdale	Gaines Reserve	Point Lonsdale	499 H5
4	25 Jan	Barwon Heads	Cnr Sheepwash Road and Cronulla Court	Barwon Heads	497 A1
Thursdays					
6	21 Jan	Fishermans Beach	The Esplanade, near Darian Road intersection	Torquay	506 C4
7	28 Jan	Windmill Reserve	Mayfair Drive	Newtown	451 D5
8	4 Feb	Bayside Bliss	Eastern Park Play Centre, Eastern Park Circuit	East Geelong	452 F4
9	11 Feb	Gaol Break	Richmond Oval, Richmond Crescent	South Geelong	452 C7
10	18 Feb	West Park	Cnr Pakington and Autumn Streets. PAS Champs Qualifier	Geelong West	451 J2

Thursday Evenings, Mass Start – 7:00 pm – All Events

A to D and PW courses. Most courses are SCATTER format.

Contact: Alan Cooke – Ph 0411 023 107

Saturday Afternoons, Mass Start – 4:00 pm – All Events

A, B, C and PW (60 or 90 minute) courses. All courses are SCORE format.

Best 3 out of 4 events for series win.

Contact: John Sheahan – Ph 9397 3493

Saturday/Sunday		Sprint Into Spring Series			2015
#	Date	Map	Start Location/Notes	Suburb	Melway
1	Saturday 17 Oct	VU St Albans	University Boulevard, St Albans	St Albans	26 A3
2	Saturday 24 Oct	Darebin Parklands	Separation Street eastern end	Alphington	31 D9
3	Saturday 7 Nov	Eltham College	Main Road	Research	22 K1
4	Saturday 14 Nov	VU Edgewater	Farnsworth Avenue	Footscray	2S 4F
5	Saturday 21 Nov	Deakin Burwood	Holland Avenue	Burwood	61 B5
6	Saturday 28 Nov	Brimbank Park	Brimbank Road	Keilor East	14 K9
7	Sunday 29 Nov	RMIT Bundoora	Plenty Road. Victorian Sprint Champs <i>Subject to permit – please check website for final details</i>	Bundoora	10 A8

Orienteering Victoria presents an exciting series of sprint distance races on Saturday afternoons. Each race features three courses on full-colour, large-scale maps.

Check details at www.parkstreeto.com.au/sprint

Summer Mountain Bike Orienteering (MTBO) Series



A series of low-key mountain bike orienteering events during January, February and March. Ideal as an introduction to MTBO, or for those wishing to enjoy a summer bike ride of discovery, or just for some extra training.

All courses are 75 minute SCORE format. 20 controls, all worth 20 points, with a 10 point penalty per minute late. You decide which ones to visit and in what order.

Enter on the day. Cost: \$10.00 adults, \$5.00 juniors/students. To find out where and when events are on, visit **www.vicmtbo.com**.

Contact: Peter Cusworth – Ph 0409 797 023.

Other Victorian Orienteering Events

Other park and street, bush and mountain bike events are held in and near Melbourne, and in regional Victoria, during the autumn/winter/spring period on weeknights and weekends.

Visit www.vicorienteeing.asn.au

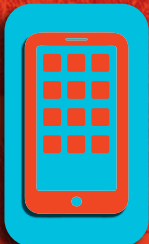
Extreme Weather Conditions and Other Late Changes

Events may be cancelled in the event of certain weather conditions such as Code Red fire danger, extreme heat, or heavy rainfall/storms/flooding. Other late changes may sometimes be necessary. Updates will be posted on **www.vicorienteeing.asn.au**.



PO Box 1010, Templestowe, Vic, 3106 | Ph: 8846 4140 | Fax: 9846 7473





**Scan QR code
with your smart
phone to find us
on the web**

